

WELCOME

Wilde Lake Middle School

“Home of the Tiger Sharks”



Navigating Middle School

WORKING TOGETHER
FOR A SUCCESSFUL TRANSITION
TO MIDDLE SCHOOL



WLMS ADMIN TEAM

Mr. Rattay - Principal



Ms. Keck - Assistant
Principal (Gr 6 & 8))



Mrs. Harmon- Assistant
Principal (Gr 6 & 7))



Meet the Staff

Front Office

Mrs. Godwin - Admin Secretary

Mrs. Eldridge - Teacher Secretary

Ms. Lewis - Teacher Secretary

School Counselors

Mrs. Cornelius - 6th

Ms. Hill - Guidance Secretary

BSAP Liaison

Ms. Mijiza Green

6th Grade Team Leader

Mrs. Gagern

Spec Ed ITL

Mrs. Regan

GT Resource Teacher

Mrs. Perry



In order to
teach a
child well
we must
know a
child well.



Learning and Leading with Equity

The Fierce Urgency of Now

VISION: Every student and staff member embraces diversity and possesses the skills, knowledge and confidence to positively influence the larger community.

MISSION: HCPSS ensures academic success and social-emotional well-being for each student in an inclusive and nurturing environment that closes opportunity gaps.



Four Overarching Commitments

VALUE

ACHIEVE

CONNECT

EMPOWER

WLMS Vision & Mission



Vision

Develop learners who take risks, embrace challenges, and make positive contributions in our diverse community.

Mission

Committed to celebrating our diversity and the development of student and staff strengths.

- Students will become self-advocates and creative problem solvers in a safe and rigorous environment.
- Staff will engage students in high quality instruction to cultivate academic achievement.
- The school will partner with families to foster academic, social, and emotional student growth.



Preparing
Students
for the
Future

21st Century Skills

Academic
Behaviors

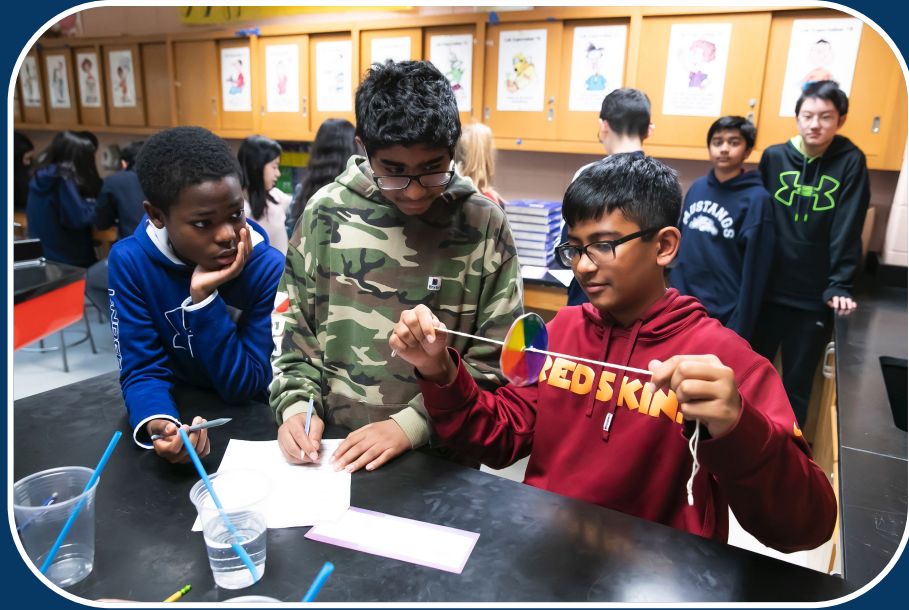
- Life and Career Skills
- Learning and Innovation Skills
- Information Media and Technology Skills

High
School
Readiness

College
and
Career
Readiness

Academics





The level of academic achievement that students attain by eighth grade has a larger impact on their college and career readiness than anything that happens academically in high school.

Source: The Forgotten Middle: Ensuring that All Students Are On Target For College and Career Readiness Before High School

The Middle School Schedule



All students are enrolled in seven 50-minute classes every day.



In accordance with state requirements, each year middle school students receive instruction in the following areas:

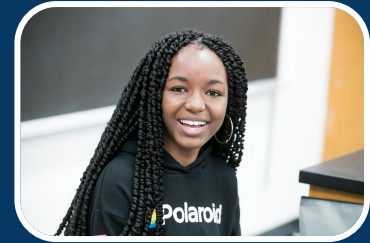
- English Language Arts
- Fine Arts
- Health
- Mathematics
- Physical Education
- Science
- Social Studies



English Language Arts, Social Studies, Science, and Mathematics offer a Gifted and Talented (G/T) option for instruction. Mathematics has an above-grade level course in addition to the G/T options.

Students are also required to receive instruction in the following during their middle school experience:

- Technology
- Financial Literacy
- Careers





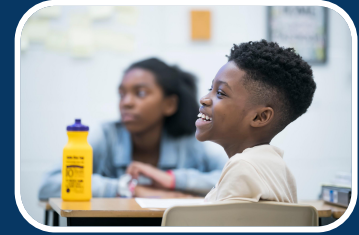
Fine Arts Options

Students in grade 6 will choose from the following options:

- Band
- Chorus
- Orchestra
- Art/General Music/Theater Arts combination

Additional Course Options

- Family and Consumer Science
- G/T Research or Seminars/Interventions in reading and/or mathematics
- Reader's and Writer's Workshop
- Boost Your Brain
- 21st Century Learning
- Additional Fine Arts Classes
- Other Elective Course Offerings



Let's Break That down a bit more...

Every 6th Grader takes:

- ELA
- Science
- Math
- Social Studies
- PhysEd (SEM)/
HealthEd (Q)/
TechEd (Q)

Pick Your Fine Arts Option
(Choose One Bullet):

- Chorus (FY)
- Band (FY)
- Orchestra (FY)
- ***Fine Arts Rotation:**
Art, Gen Mus, FACS,
Theater (1Q each)

**Pick Your Final Elective
(Choose Two Bullets):

- GT RESEARCH (must be in
GT ELA/GT MATH)
- 21st Century /Digital
Citizenship
- Art/FACS
- Gen Music/Theater
- Boost Your Brain/Intro to
Readers Writers

**If your student chooses the FA Rotation - they can NOT double up
Art, GM, FACS, Theater in Final Elective*

***If your student takes a Reading or Math Intervention it will replace
the Final Elective***

Middle School G/T Classes



G/T
Math



G/T
English



G/T
Science



G/T
Social
Studies



G/T Mathematics

Provides an accelerated and enriched sequence that follows a curriculum of concepts at least two years above the general education curriculum.

- 6 - Pre-Algebra G/T
- 7 – Algebra I G/T
- 8 - Geometry G/T



G/T English

Extends the Maryland College and Career Ready Standards for English Language Arts through

- an accelerated pace,
- reading and analyzing challenging and complex literature and literary nonfiction independently,
- writing a variety of interpretive,
- and analytical pieces, and conducting independent research.

Differentiated tasks and texts are included at all grade levels.



G/T Science

An enriched and accelerated curriculum where students explore cross-cutting concepts, as well as science and engineering practices.

6 - Earth Science G/T

7 - Life Science G/T

8 - Physical Science G/T





G/T Social Studies

Provides an enriched and accelerated curriculum, including differentiated objectives, where students explore civic and cultural principles and engage in inquiries that focus on essential, related questions.

6 – Geography and World Cultures G/T

7 – Geography and World Cultures G/T

8 – United States History G/T



Placement Process for Middle School G/T Classes

5th Grade and Throughout Middle School

- Multiple criteria examined (CogAT, MAP, MCAP, class performance)
- CogAT administered to all students in 5th and new HCPSS students in middle school
- ALL students reviewed

Parental Input in Placement Process

If after reviewing the Placement Committee's professional recommendation, parents/guardians still wish to enroll their students in one or more G/T classes, they may complete the Course Placement Review request online through HCPSS Connect.

Who can initiate the placement process in middle school?

Teachers

Families

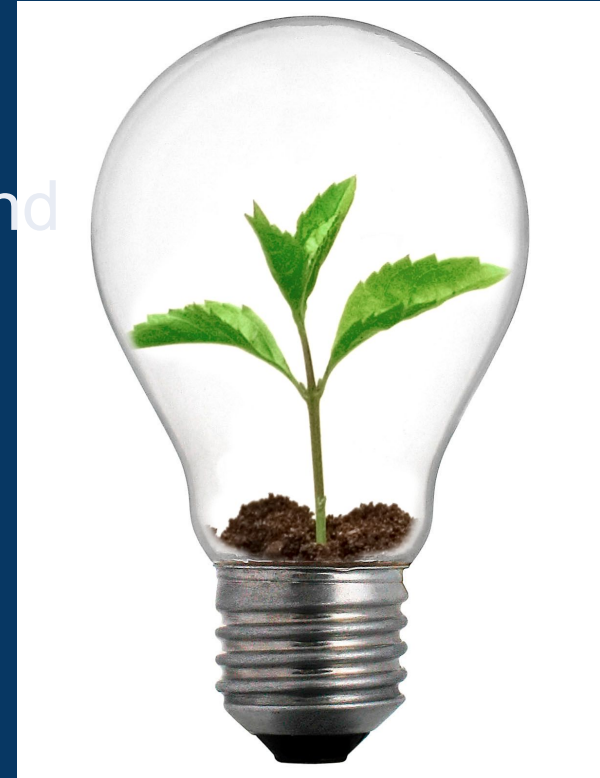
Students

Middle School G/T Research Class

- Authentic research to address real-world problem
- For students enrolled in G/T Math and G/T English based upon G/T Placement Committee recommendations

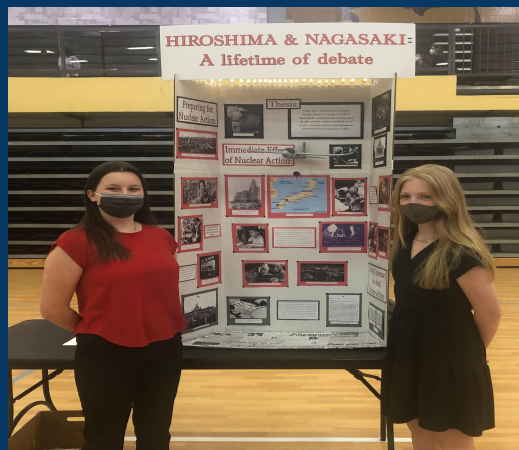
Research

- Original
- Primary Research Methods
- Authentic Product
- Authentic Audience





G/T Instructional Seminars



Supporting Student Achievement & Growth



Finding the Right Balance Between

- Course Placements
- Rigor
- Personal Interests
- Student Success
- Happiness





Academic Behavior

Motivation and behavior, combined, have more impact on a student's readiness than academic achievement.

-LearnED by Pearson

The earlier a student develops important academically-related behaviors, the more likely these behaviors are to become a habit.



Important Dates

Date	Activity
2/2/23 - 2/17/23	<ul style="list-style-type: none">• Course Recommendations for rising 6th graders available in Synergy for parents to review.• Parents will enter student course requests in Synergy no later than 2/17/23.• Parents will complete a Course Placement Review (CPR) as appropriate.
6/1/23	Rising 6th Grade Visit
8/24/23	New Student Orientation and Block Party
8/28/23	<i>1st Day of 6th GRADE - WOO HOO!!!!!!</i>

WE ARE HERE TO

MAKE GOOD THINGS

HAPPEN

